



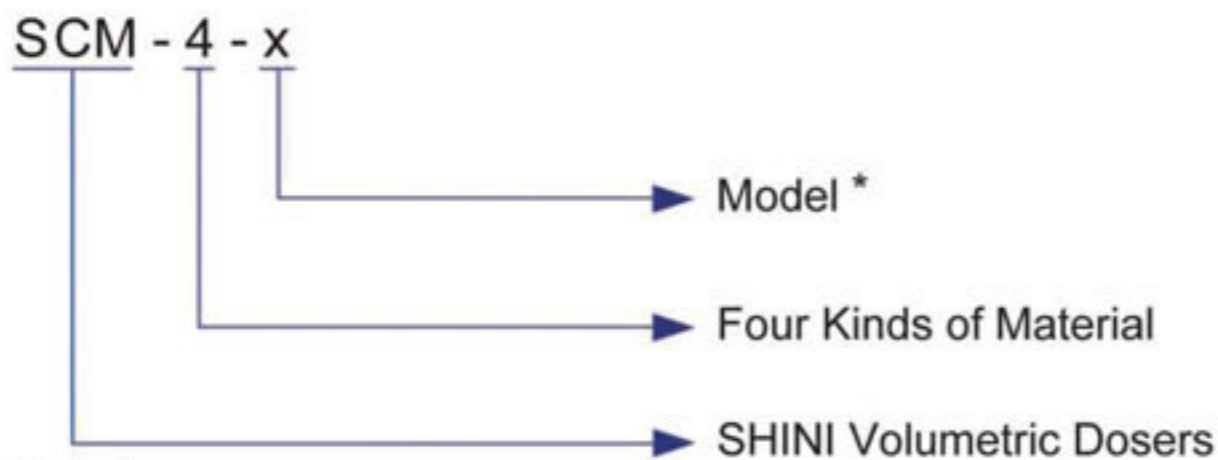
4 Components Volumetric Dosers



SCM-4

SCM-4 Series

■ Coding Principle



Note *

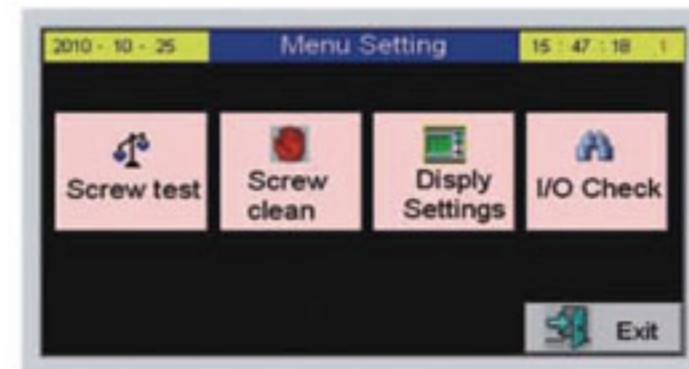
With specifications of single-color dosers, Clients are free to choose gear motor with different deceleration ratios and different screw diameters based on the requirements of throughput.

■ Features

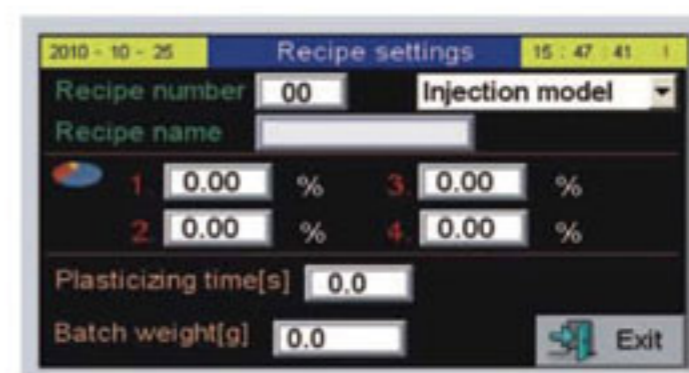
- Use brushless DC motor and free from maintenance.
- Everlasting data memorizer and setting storage.
- Microprocessor control, intelligent and accurate in calculation.
- SCM-F adopts touch screen design with PLC control, making a intelligent calculation and stable control.
- Dosing screws are chrome plated for durability.
- Unit is comprised of standard modules for ease of cleaning, disassembly and interchangeability.
- Blender is a standard accessory for this unit to make multiple materials evenly mixed.
- Main material hopper is a standard accessory for fourfold color dosers.
- When work with SHD-100 or models above SHD-160U, installation base should have an additional large flange mounted on (without three-tube hopper magnet).
- Upon request, it can be built to comply with worldwide electrical safety standards (For example: CE, UL, CSA, JIS etc.).

■ Application

The SCM-4 series volumetric dosers are suitable for auto-proportional mixing of new materials, regrinds, master batch and additives. A brushless DC motor is used in this series and touch screen design plus PLC control are employed. According to the preset mixing proportion, the formula set by digital microprocessor would be automatically converted into rotation speed to extrude materials with an accuracy of $\pm 1\%$. A gear motor with deceleration ratio of 38:1 or 75:1 is coupled to a dosing screw of 12, 14 or 16mm diameter. Clients are free to choose gear motor with different deceleration ratio to collocate with different screw diameters for use.



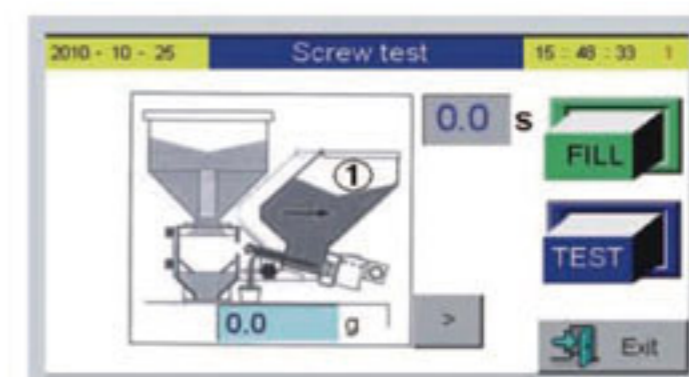
Setting Screen 1



Setting Screen 2



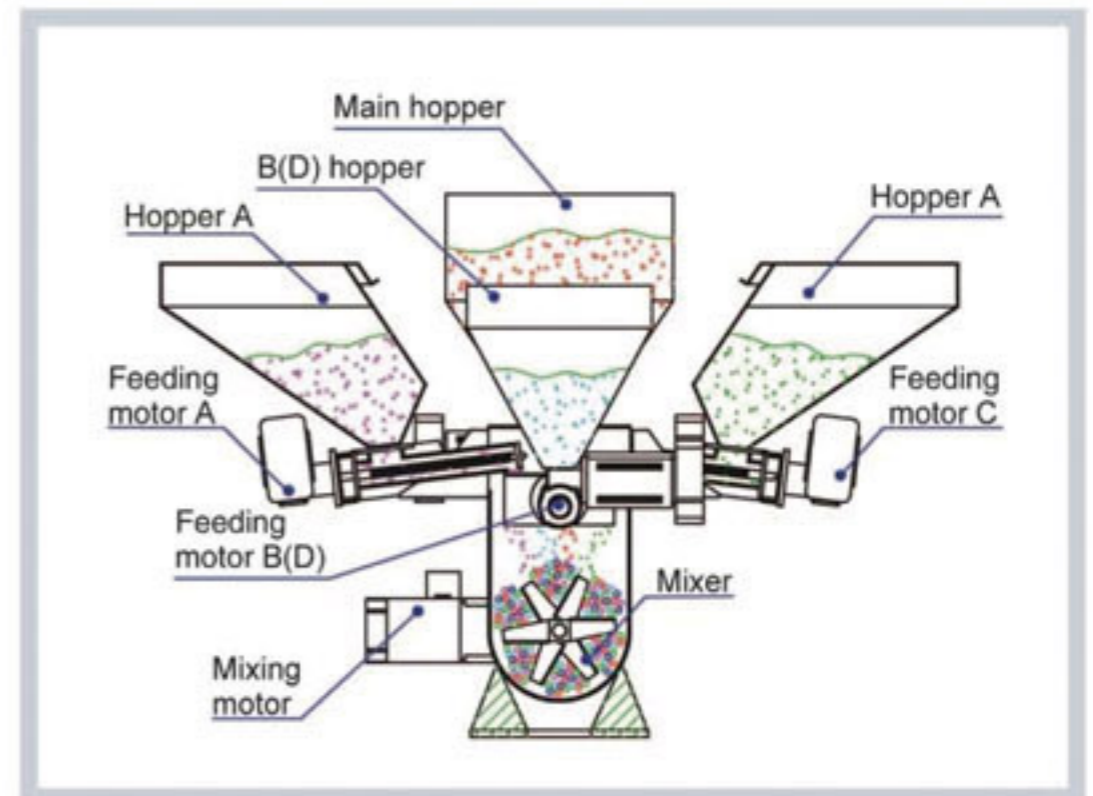
Monitor Screen



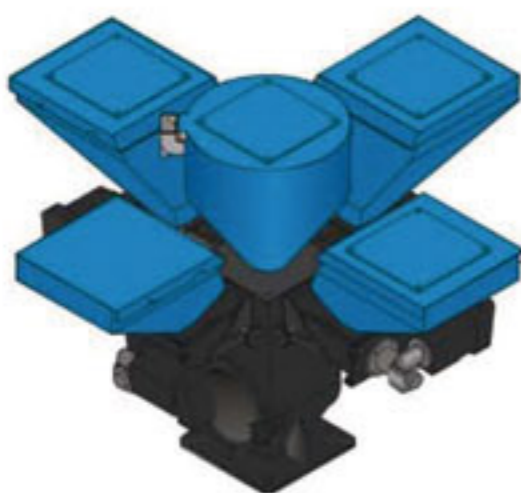
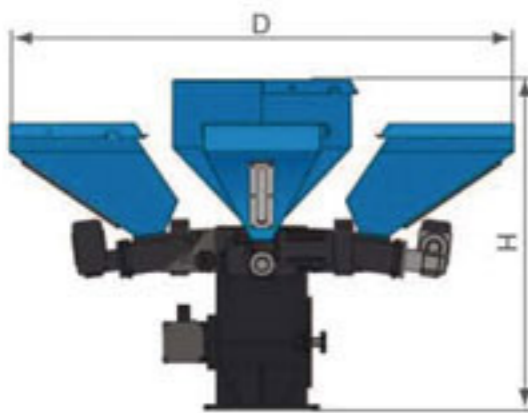
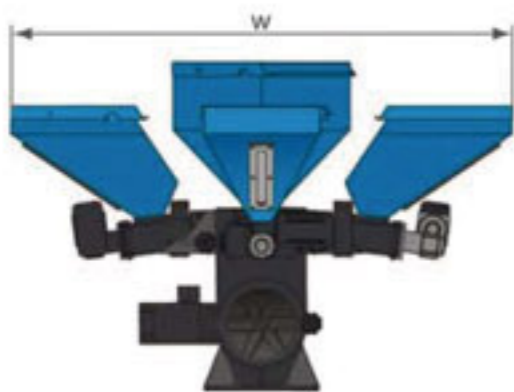
Test Screen

Working Principle

Signals from control cabinet will be sent to motor (A/B/C/D). Then it begins to work. The rotary force is transferred to the dosing screw through shaft connector. Color additives in hopper (A/B/C/D) will fall into the groove of conveying screw, then be taken to hopper base by rotating action of the screw. Meanwhile materials in main hopper falls into base and is sent to IMM by evenly mixing to conveying color additives with accurate metering.



Outline Drawings Specification



Model	Single Color Unit						Fourfold Color Unit
	SCM-38-16	SCM-38-14	SCM-38-12	SCM-75-16	SCM-75-14	SCM-75-12	SCM-4
Item							
Motor Power(kW)	0.06	0.06	0.06	0.06	0.06	0.06	0.06×4
Motor Speed (rpm)	0~3000	0~3000	0~3000	0~3000	0~3000	0~3000	0~3000
Output Power of Mixing Motor (kW)	0.09	0.09	0.09	0.09	0.09	0.09	0.09
Screw External Dia.(mm)	16	14	12	16	14	12	**
Output Capacity (kg/hr)	1.1~32	0.6~20	0.3~10	0.5~15	0.2~8	0.1~4	*
Storage Bin(L)	10	10	10	10	10	10	10
Gear Ratio	38:1	38:1	38:1	75:1	75:1	75:1	-
Main Material Hopper	-	-	-	-	-	-	Standard
Mixer	-	-	-	-	-	-	Standard
Dimension							
H (mm)	-	-	-	-	-	-	736
W (mm)	-	-	-	-	-	-	1125
D (mm)	-	-	-	-	-	-	1125
Weight (kg)	-	-	-	-	-	-	75

We reserve the right to change specifications without prior notice.

Note: 1) MotorGear includes two deceleration ratios of 38:1 or 75:1, Screw external dia. includes 12, 14, 16mm. *Means output capacity is depended on the model that clients selected, data of single color doser can be a reference.

2) **stands for the external dia. of the screw is up to client's model choice.

3) All the output capacity from above models is base on the data from density 1.2 , dia.2~3mm

4) Power supply: 1Φ, 230VAC, 50 / 60Hz.



SHINI PLASTICS TECHNOLOGIES, INC.

Headquarters:

Shini Plastics Technologies, Inc.
No. 23 Minhe St., Shulin City, Taipei, Taiwan
tel: +886 2 2680 9119
fax: +886 2 2680 9229
email: shini@shini.com

Factories:

- Taipei / Taiwan
- Dongguan / China
- Ningbo / China
- Pinghu / China
- Mumbai / India